

AC60 S01F001
Vnet 4.0 IP: 10.122.1.101
64/174/54C **1**

AC60 S01F003
IP: 10.122.1.102
62/193/61C **2**

AC60 S01F005
IP: 10.122.1.103
60/174/50C **3**

AC60 S01F004
IP: 10.122.1.104
58/199/77C **4**

AC60 S01F002
IP: 10.122.1.105
64/166/57C **5**

GC20 S01G001
IP: 10.122.1.106
60/209/37C **6**

GC20 S01G001
IP: 10.122.1.107
55/222/77C **7**

Conviron Flex+CO2 S100104
IP: 10.122.1.108
81/222 **8**

AC60 S01F006
IP: **9**

GC20 S01G002
IP: 10.122.1.110
57/109 **10**

GC20 S01H005
IP: 69/192 **11**

Conviron Flex+CO2 S100111
IP: 10.122.1.112
59/235 **12**

AC80 S01F008
IP: 76/212 **13**

GC20 S01H001
IP: 10.122.1.214
66/181 **14**

GC20 S01H003
IP: 49/192 **15**

Conviron Flex S100108
IP: 10.122.1.116
61/233 **16**

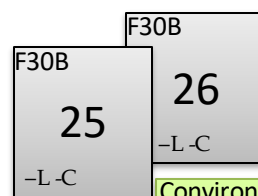
AC60 S00J001
IP: 67/188 **17**

GC20 S01H004
IP: 65/153 **18**

GC20 S01H002
IP: 10.122.1.219
58/148 **19**

Conviron Flex S100107
IP: 10.122.1.120
64/235 **20**

Conviron Flex S100105
IP: 10.122.1.121
59/234 **21**



Conviron Flex S100115
IP: 10.122.1.122
63/227 **22**

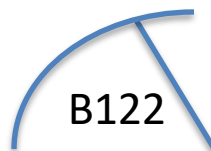
= Eye wash station

EP= Emergency Proc. Info.

FE = Fire Extinguisher



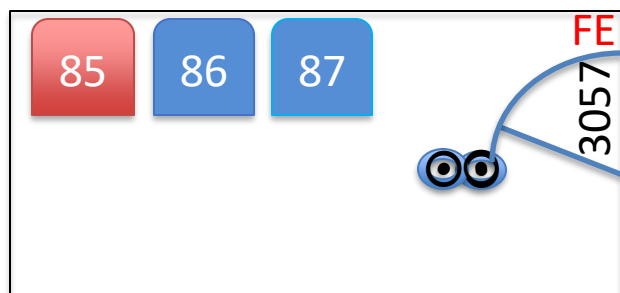
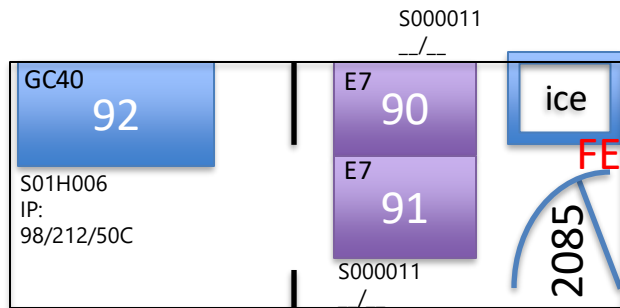
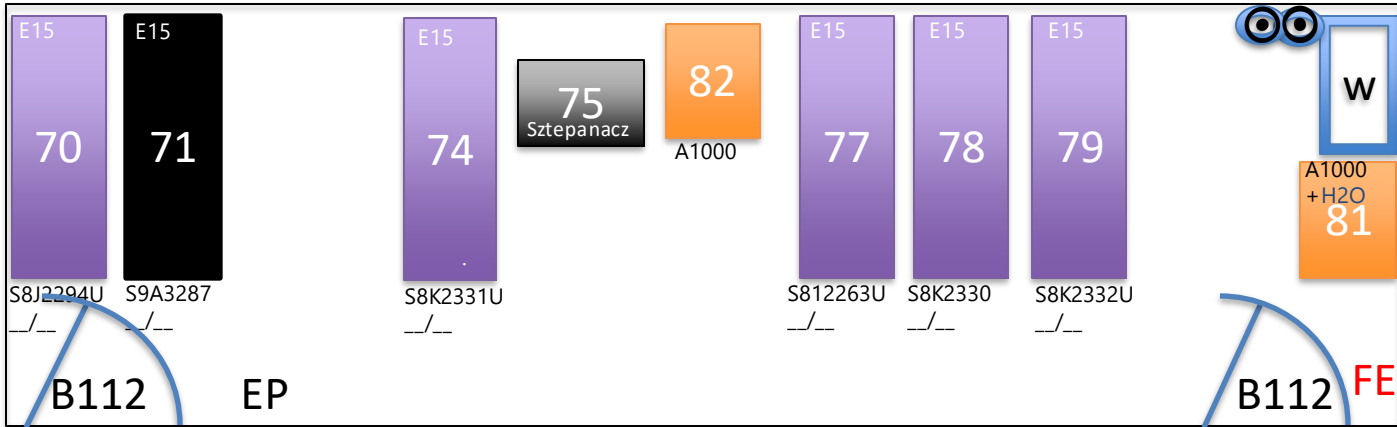
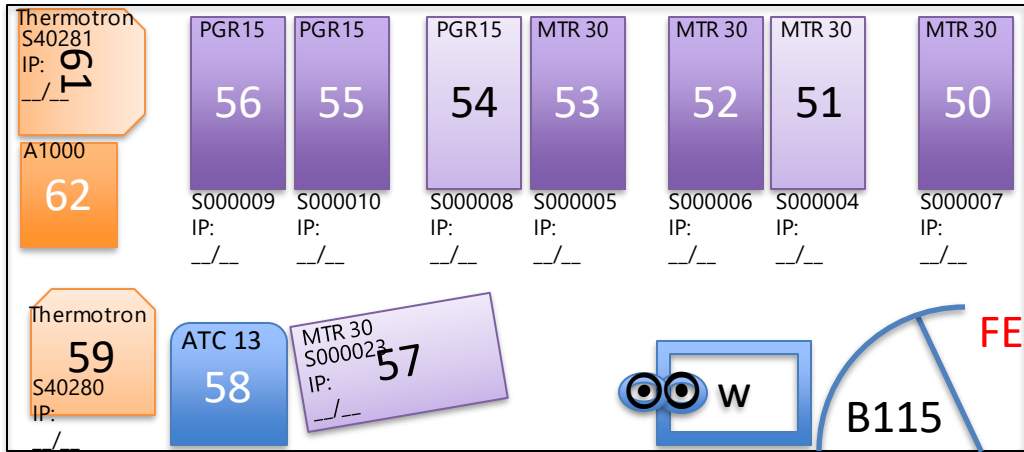
EP



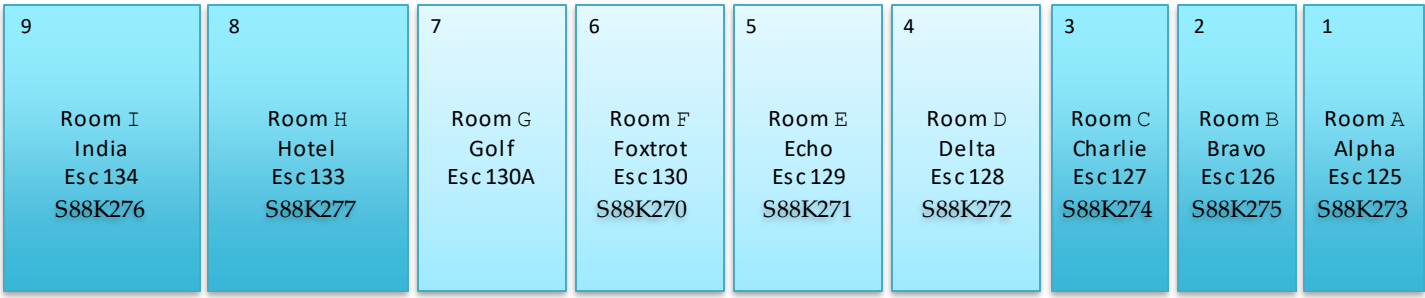
PGR15 S970097
IP: **23**

Growth Facilities

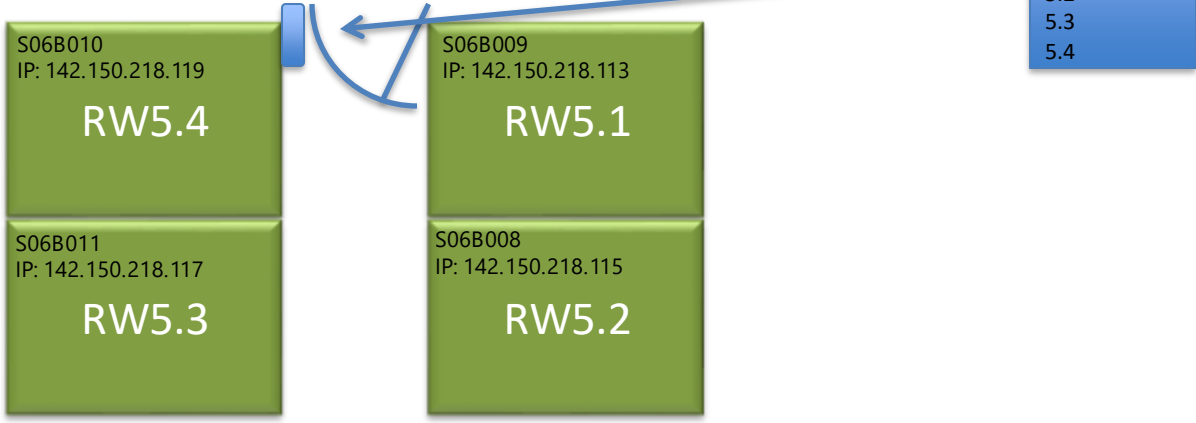




ESC Basement Growth Rooms



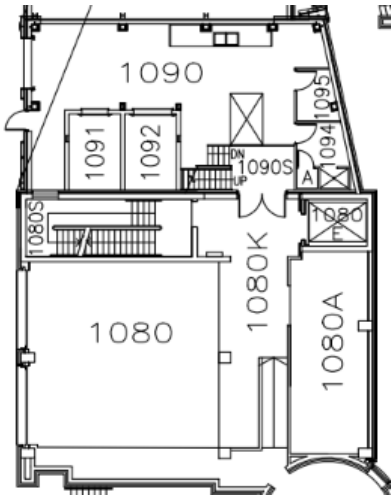
RW 522 Growth Rooms



RW 705 Chamber



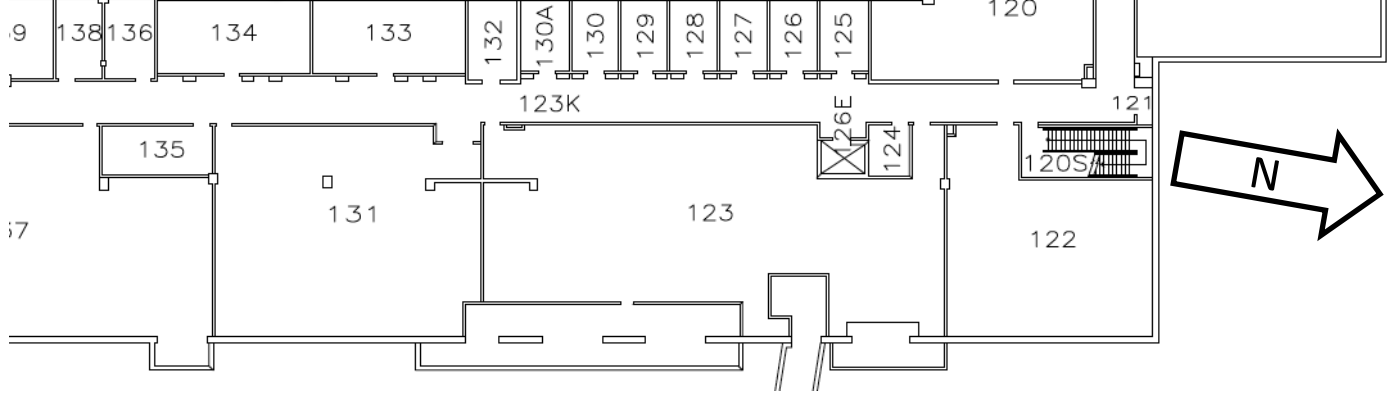
Soil Facility



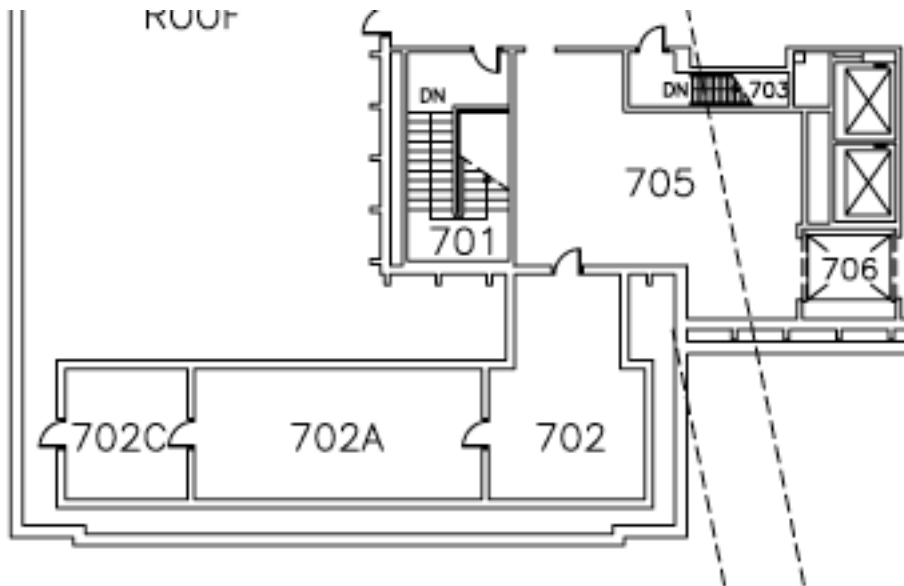
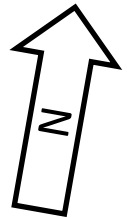
NOTE—All room numbers are preceded by Block "B"

WALK IN GROWTH ROOMS 1-9 OR A,B,C..I

9 8 7 6 5 4 3 2 1



Ramsay Wright 7th floor growth facilities



Prep/Potting room RW705.

Zone 1 RW702C,

Zone 2 RW702A,

Zone 3 RW702